

ISSUE 7; June 2016

### Description

- PLL based, one time only factory programmable for a fast lead time  
Crystal oscillator in a hermetically sealed ceramic package with a metal lid  
See CFPS-56 for our standard crystal oscillator alternative

### Frequency Parameters

- Frequency 1.0MHz to 200.0MHz
- Frequency Stability  $\pm 20.00\text{ppm}$  to  $\pm 100.00\text{ppm}$

### Electrical Parameters

- Supply Voltage 3.3V  $\pm 10\%$
- Stand-by current: 15 $\mu$ A max
- Start Up Time: 2ms max

### Operating Temperature Ranges

- -20 to 70°C
- -40 to 85°C

### Output Details

- Output Compatibility CMOS
- Drive Capability 15pF max

### Output Control

- Logic '1' (>70%VS) to pad 1 enables oscillator output  
Logic '0' (<30%VS) to pad 1 disables oscillator output; when disabled the oscillator output goes to the high impedance state  
No connection to pad 1 enables oscillator output

### Noise Parameters

- Period Jitter: 200ps max

### Environmental Parameters

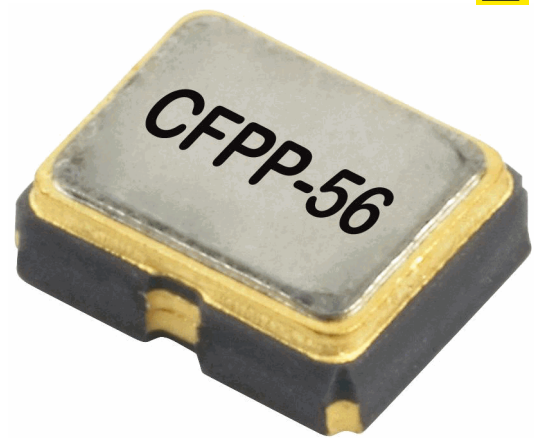
- Storage Temperature Range: -55 to 125°C

### Ordering Information

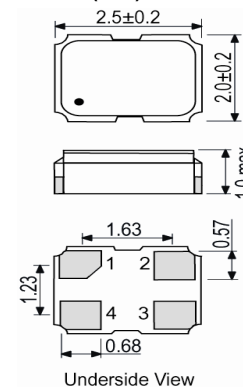
- Frequency\*  
Model\*  
Output Compatibility  
Frequency Stability (over operating temperature range)\*  
Operating Temperature Range\*  
Supply Voltage  
(\*minimum required)
- Example  
20.0MHz CFPP-56  
CMOS  $\pm 50\text{ppm}$  -40 to 85C 3.3V

### Compliance

- RoHS Status (2011/65/EU) Compliant
- REACh Status Compliant
- MSL Rating (JDEC-STD-033): Not Applicable



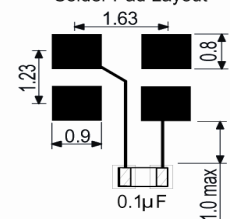
### Outline (mm)



### Pad Connections

1. Standby
2. GND
3. Output
4. +Vs

### Solder Pad Layout



### Sales Office Contact Details:

UK: +44 (0)1460 270200  
Germany: 0800 1808 443

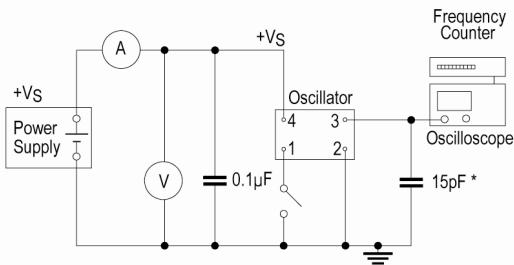
France: 0800 901 383  
USA: +1.760.318.2824

Email: [info@iqdfrequencyproducts.com](mailto:info@iqdfrequencyproducts.com)  
Web: [www.iqdfrequencyproducts.com](http://www.iqdfrequencyproducts.com)

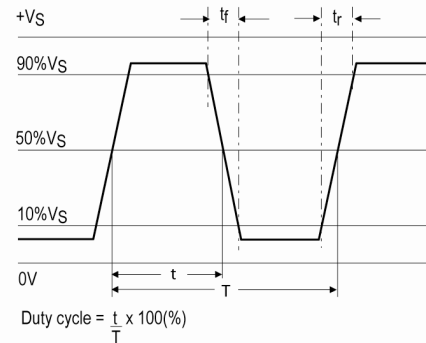
### Packaging Details

- Pack Style: Cutt**      In tape, cut from a reel  
 Pack Size: 1
- Pack Style: Reel**      Tape & reel in accordance with EIA-481-D  
 Pack Size: 1,000

### Test Circuit



### Wave Form



### Electrical Specification - maximum limiting values 3.3V ±10%

Frequency Min	Frequency Max	Temperature Range	Stability (Min)	Current Draw	Rise and Fall Time	Duty Cycle
		°C	ppm	mA	ns	%
1.0MHz	9.999999MHz	-20 to 70	±20.0	10	5	45/55%
		-40 to 85	±20.0	10	5	45/55%
10.0MHz	29.999999MHz	-20 to 70	±20.0	10	4	45/55%
		-40 to 85	±20.0	10	4	45/55%
30.0MHz	74.999999MHz	-20 to 70	±20.0	15	4	45/55%
		-40 to 85	±20.0	15	4	45/55%
75.0MHz	132.999999MHz	-20 to 70	±20.0	20	4	45/55%
		-40 to 85	±20.0	20	4	45/55%
133.0MHz	165.999999MHz	-20 to 70	±20.0	22	4	45/55%
		-40 to 85	±20.0	22	4	45/55%
166.0MHz	200.0MHz	-20 to 70	±20.0	25	4	45/55%
		-40 to 85	±20.0	25	4	45/55%

This document was correct at the time of printing; please contact your local sales office for the latest version.

[Click to view latest version on our website.](#)

### Sales Office Contact Details:

UK: +44 (0)1460 270200

Germany: 0800 1808 443

France: 0800 901 383

USA: +1.760.318.2824

Email: [info@iqdfrequencyproducts.com](mailto:info@iqdfrequencyproducts.com)

Web: [www.iqdfrequencyproducts.com](http://www.iqdfrequencyproducts.com)