

# TF Series Crystal



- 2mm X 6mm Cylindrical
- 3mm X 8mm Cylindrical
- RoHS Compliant Available



Series	TF206	TF308
Frequency Range	32kHz to 100kHz	29kHz to 40kHz
Frequency Tolerance	(See Part Number Guide)	
Frequency Stability (ppm)	$-3.4 (\pm 0.6) \times 10^{-8} / ^\circ\text{C}^2$	$-3.4 (\pm 0.6) \times 10^{-8} / ^\circ\text{C}^2$
Turnover Temperature (To)	+25°C ±5°C	+25°C ±5°C
Operating Temperature Range	-10°C to +60°C	-10°C to +60°C
Storage Temperature Range	-40°C to +85°C	-40°C to +85°C
Aging	±5ppm / 1 <sup>st</sup> yr max	±5ppm / 1 <sup>st</sup> yr max
Shunt Capacitance	0.8pF – 1.7pF typ*	0.8pF – 1.7pF typ*
Equivalent Series Resistance	35K ohms max	35K ohms max
Load Capacitance	12.5pF of specify	12.5pF of specify
Drive Level	1μW max	1μW max
Motional Capacitance	1fF – 4fF*	1fF – 4fF*
Capacitance Ratio	425-800 typ*	425-800 typ*
* Indicates that the spec given varies depending on frequency		
Insulation Resistance	500M ohms minimum / DC 100VDC ±15VDC	
Hermeticity of Seal	1 x 10 <sup>-2</sup> mPa (m <sup>3</sup> /s) max	
Shock Resistance	±5ppm max (drop test onto a hard wooden board from 75cm)	

## Marking Detail

Line 1 = Frequency

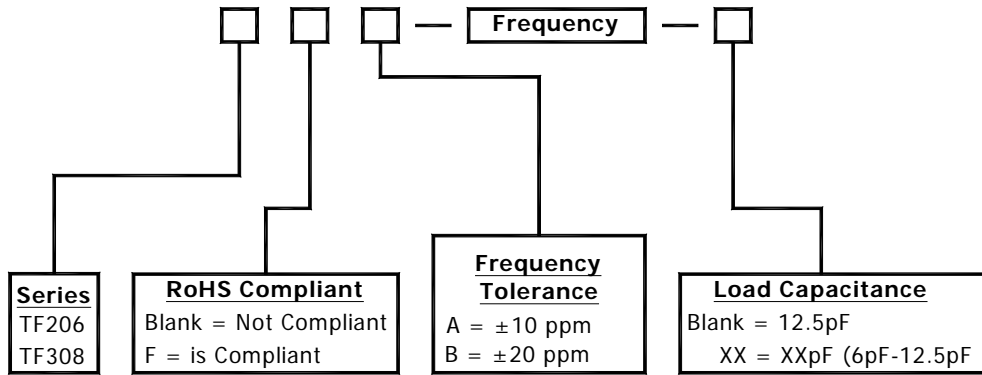


**MMD Monitor/Quartztek**  
 30400 Esperanza, Rancho Santa Margarita, CA, 92688  
 Phone: (949) 709-5075, Fax: (949) 709-3536, [www.mmdcomp.com](http://www.mmdcomp.com)  
 Sales@mmdcomp.com



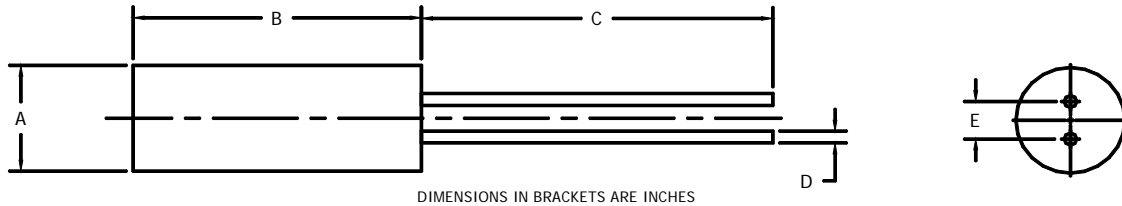
Revision: 05/05/11 G

## Part Number Guide



Please Consult with MMD Sales Department for any other Parameters or Options

## Mechanical Details



Series	A	B	C	D	E
TF206	2.1 [.083]	6.2 [.244]	10.0 [.394]	0.26 [.010]	0.7 [.028]
TF308	3.1 [.122]	8.2 [3.23]	10.0 [.394]	0.3 [.012]	0.8 [0.031]



**MMD Monitor/Quartztek**  
 30400 Esperanza, Rancho Santa Margarita, CA, 92688  
 Phone: (949) 709-5075, Fax: (949) 709-3536, [www.mmdcomp.com](http://www.mmdcomp.com)  
 Sales@mmdcomp.com



Revision:	05/05/11 G
-----------	------------