

WC26SM Series Crystal

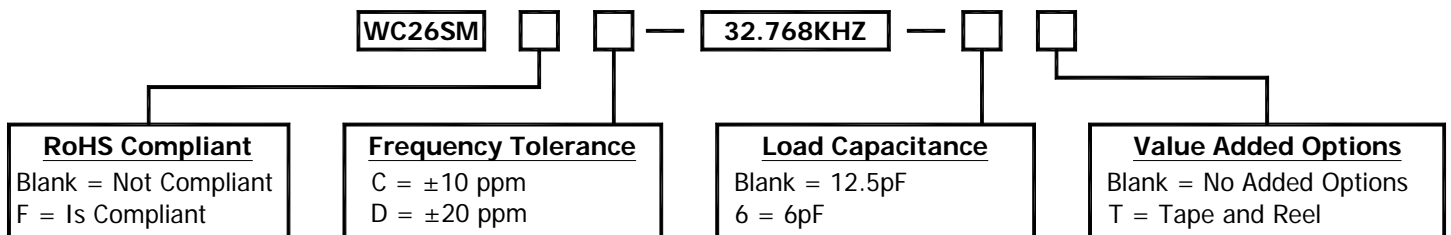


- Surface Mountable Clock Crystal
- 32.768 KHz
- Small Compact Size
- RoHS Compliant



Frequency	32.768 KHz
Tolerance at +25°C	See Part Number Guide for Options
Stability	-0.034 ppm (± 0.006)/ $^{\circ}C^2$
Aging	± 5 ppm/ yr
Shunt Capacitance	1.5 pF
Load Capacitance	12.5 pF Typ (6pF Option)
Motional Capacitance	0.003 pF TYP
Operating Temperature	-40°C to +85°C
Storage Temperature	-40°C to +85°C
Equivalent Resistance	50k Ohms Max
Drive Level	1 μ W Max
Temperature Coefficient	0.04 ppm / $^{\circ}C$
Insulation Resistance	500 Megaohms Min / DC 100 V
Shock Resistance	± 5 ppm Max (Drop test 3 times on a hard board from 75 cm)

Part Number Guide



Please consult with MMD sales department for any other parameters or options.

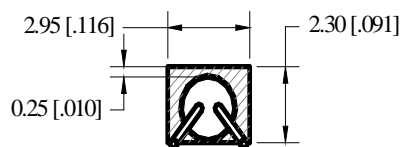
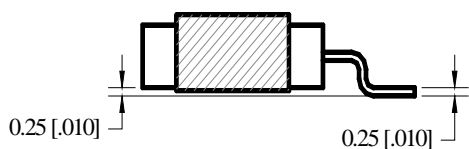
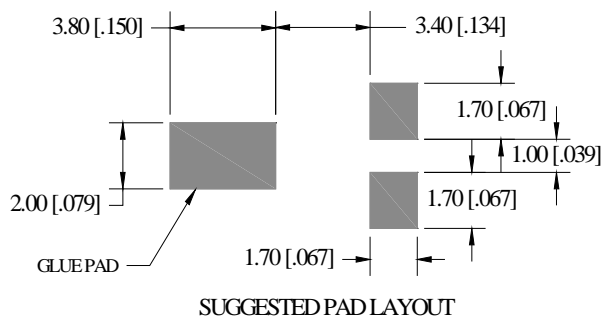
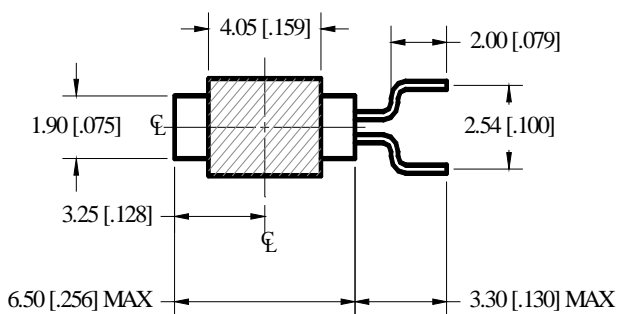


MMD Monitor/Quartztek
 30400 Esperanza, Rancho Santa Margarita, CA, 92688
 Phone: (949) 709-5075, Fax: (949) 709-3536, www.mmdcomp.com
 Sales@mmdcomp.com



Revision: WC26SM082812G

Mechanical Details

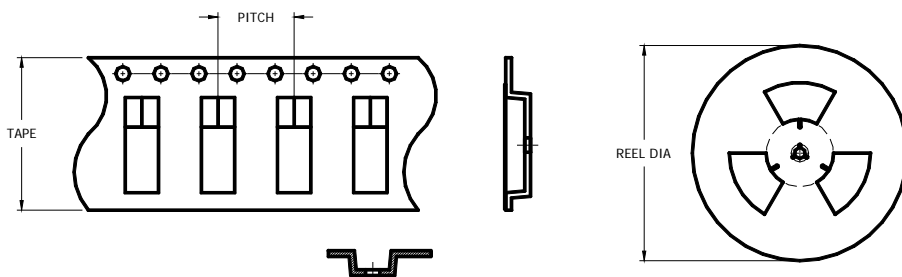


DIMENSIONS IN BRACKETS ARE IN INCHES

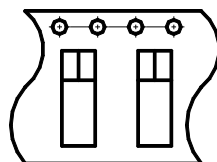
NOTES

1. CAN PLATING = Ni
2. LEAD PLATING = Sn 95% - 98%, Cu 2% - 5%

Tape & Reel



PITCH	8.0
TAPE	16.0
REEL	330 [13 IN]
COUNT	1000



NOTES: UNLESS OTHERWISE SPECIFIED

1. Applicable Standards / Specifications
ANSI Y14.5M, Dimensions and Tolerances
EIA-481-B, 8 mm through 200mm Embossed Carrier Taping and 8 mm and 12 mm
Punched Carrier Taping of Surface Mount Components for Automatic Handling.
2. Dimensions are in millimeters.
3. Tolerances are ± 0.1 mm unless otherwise specified.
4. Do not scale drawing.



MMD Monitor/Quartztek
 30400 Esperanza, Rancho Santa Margarita, CA, 92688
 Phone: (949) 709-5075, Fax: (949) 709-3536, www.mmdcomp.com
 Sales@mmdcomp.com



Revision: WC26SM082812G