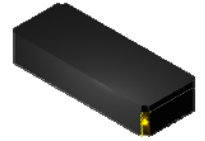


WC315 Series Crystal

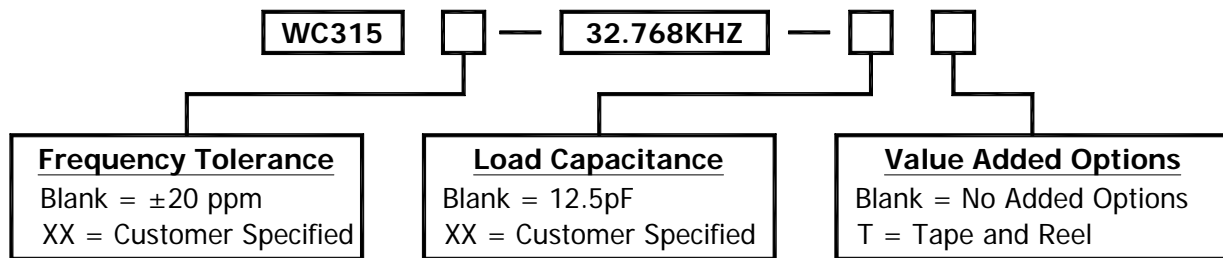


- Ceramic SMD Tuning Fork Crystal
- 32.768KHZ
- RoHS Compliant
- Tape and Reel Packaging Available



| | |
|------------------------------|--|
| Frequency | 32.768KHZ |
| Frequency Tolerance at +25°C | ±20 ppm |
| Load Capacitance | 12.5pF |
| Operating Temperature | -40°C to +85°C |
| Storage Temperature | -55°C to +125°C |
| Turnover Temperature | +25°C ±5°C |
| Stability | -0.035 ppm / (change in °C) ² max parabolic curve |
| Equivalent Series Resistance | 70k Ohms Max |
| Drive Level | 1uW max |
| Aging | ±3 ppm first year |
| Quality Factor | 30000 typ |
| Shunt Capacitance | 1.05pF Max |

Part Number Guide



Please consult with MMD sales department for any other parameters or options.

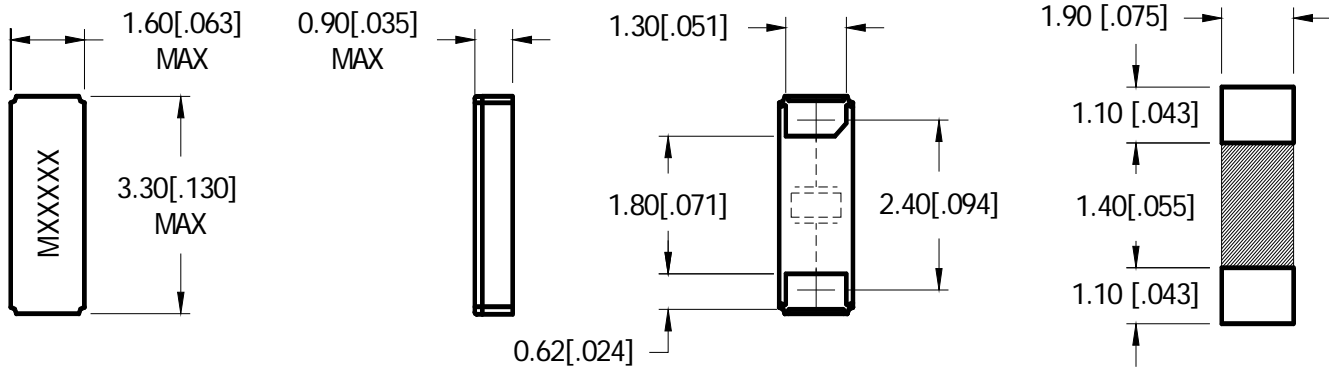


MMD Monitor/Quartztek
 30400 Esperanza, Rancho Santa Margarita, CA, 92688
 Phone: (949) 709-5075, Fax: (949) 709-3536, www.mmdcomp.com
 Sales@mmdcomp.com



Revision: WC315063011C

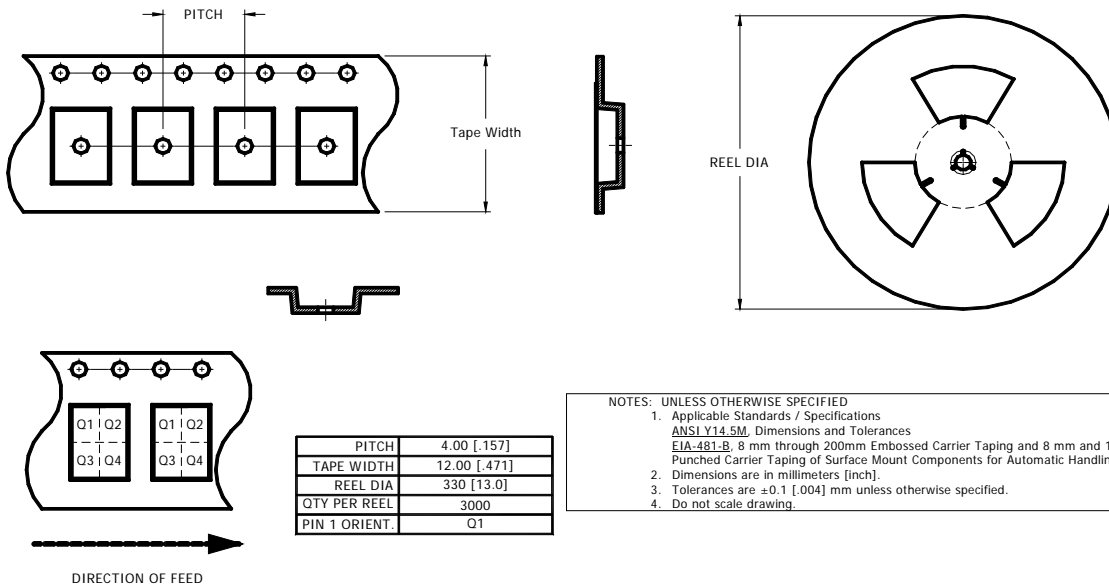
Mechanical Details



DIMENSION IN BRACKETS ARE IN INCHES
FACTORY MARKING

SUGGESTED LAND PATTERN
*DO NOT DESIGN ANY PATTERNS
ON SHADED AREA

Tape & Reel



NOTES: UNLESS OTHERWISE SPECIFIED

1. Applicable Standards / Specifications
ANSI Y14.5M, Dimensions and Tolerances
EIA-481-B, 8 mm through 200mm Embossed Carrier Taping and 8 mm and 12 mm
Punched Carrier Taping of Surface Mount Components for Automatic Handling.
2. Dimensions are in millimeters [inch].
3. Tolerances are ± 0.1 [.004] mm unless otherwise specified.
4. Do not scale drawing.



MMD Monitor/Quartztek
30400 Esperanza, Rancho Santa Margarita, CA, 92688
Phone: (949) 709-5075, Fax: (949) 709-3536, www.mmdcomp.com
Sales@mmdcomp.com



Revision: WC315063011C