

Main Feature

- RoHS Compliant
- SMD Type
- Low cost and short lead time



7.4*3.4*2.0mm

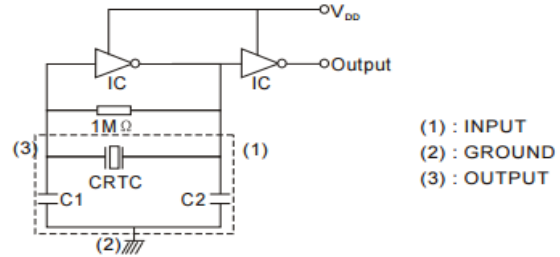
Application

- Consumer Electronics and more products

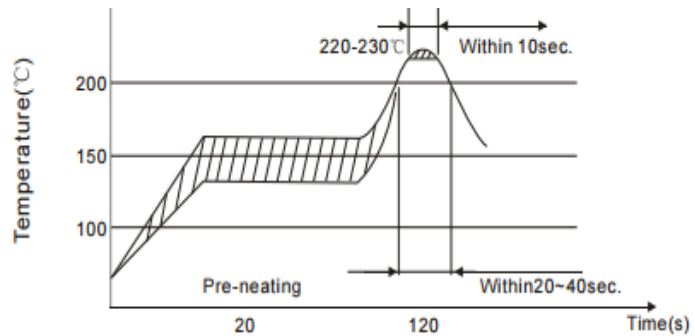
Standard Specification

Frequency Range: 2.000~8.00MHz
 Frequency Accuracy : ±0.5%
 Temp. Stability At -20°C ~+80°C : ±0.3%
 Load Capacitance C1,C2: 22pF±20%
 Operating Temp. Range: -20°C ~+80°C
 Storage Temp. Range: -40°C ~+85°C
 Equivalent Series Resistance(ESR):
 100 ohm Max. 2.00 ~ 2.99MHz
 50 ohm Max. 3.00 ~ 3.49MHz
 30 ohm Max. 3.50 ~ 8.00MHz
 Withstanding Voltage: 50V DC 1minute
 Rating Voltage: D. C. Voltage: 6V. D. C.
 A . C. Voltage: 15Vpp
 Insulation Resistance : 100M ohm Min.(at 10V DC)
 Aging (Over 10 years): ±0.5% ppm
 Supply Voltage VDD: +5.0V
 Design Mode: Thickness Shear Mode
 *Specifications Subject to Change Without Notice
 **Please specify frequency Range before order/Inquiry

Test Circuit

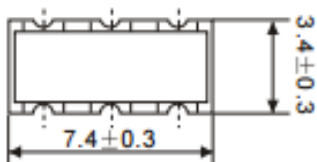


Reflow Soldering Condition

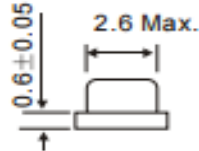


Dimension (Unit: mm)

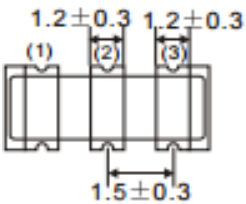
Top View



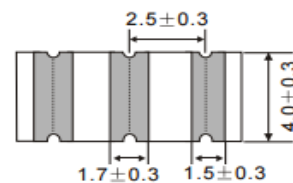
Side View



Bottom View



Recommender Land Pattern (Unit: mm)



TGS part No. Guide

| | | | | | |
|-----|----|---|---|------|---------|
| TGS | CR | T | C | 4.0M | G T L F |
| | 1 | 2 | 3 | 4 | 5 6 7 |

- 1) CR: Ceramic Resonator
- 2) T: With built-in Capacitance
- 3) C: Dimensions
- 4) 4.0M: Freq.Range 4.000MHz
- 5) G: Design Mode
- 6) T: Tape/Reel
- 7) LF: Lead Free and RoHS